

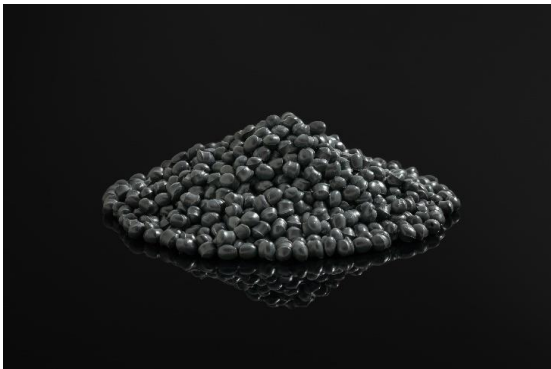
TECHNICAL DATA SHEET



GENERAL INDUSTRIES
L'Heliosis bat. B
220 rue Denis Papin
13857 Aix-en-Provence Cedex 3
France
www.general-industries.com

Issue date: 14-DEC-2022
Revision date: 31-JAN-2023
Version 2.0 / EN

ABS 2012 G+



SPECIFICATIONS

○	MATERIAL	ABS
○	COLOR	DARK GREY
○	REFERENCE	ABS 2012 G+* <i>*temporary name</i>
○	PACKAGING	BIG BAG ON PALLET
○	ORIGIN	97% FROM POST CONSUMER PLASTIC

For specific recycled content %, please contact us. We can achieve 100% recycled content.
Recycled content depending on product grades and can change due to new guidelines, operating conditions, suppliers and availability of raw materials.



PROPERTIES	ISO STANDARDS	VALUES	UNIT
MFI 220°/10KG	ISO 1133	[20 ; 25]	g/10min
Flexural modulus	ISO 178	>2300	Mpa
IZOD notched at 23°	ISO 180/1A	12	kJ/m2
Density	ISO 1183	1.07	g/cm3

PROCESSING INFORMATION

Pre-Drying: hot air or desiccant
Drying temperature: 80°C
Drying time: 2-4H

Injection Molding

Melt Temperature Range 210-230°C
Recommended Melt Temperature 215°C
Mold Temperature Range 50-70°C
Recommend Mold Temperature 60°C

This reference can be offered in black and white.

Please note that the above information relates to average values obtained from various batches. Because of the nature of the source materials these values may vary. It is the customer's responsibility to optimise processing conditions and assure suitability for use in their own products. It is also advised that the materials pre dried prior to use.

COMPLIANT WITH EUROPEAN REGULATIONS:

ROHS 2015/863/EU
REACH 1907/2006 SVHC